

Results Memo

TO: News Media

FROM: Adam D. Probolsky
Probolsky Research

SUBJECT: New National Poll Results

DATE: February 14, 2017

LARGE MAJORITY SAYS IT IS THE NEWS MEDIA'S RESPONSIBILITY TO FACT-CHECK POLITICIANS

AMERICANS BELIEVE THAT ONE MILLION MANUFACTURING JOBS WILL RETURN TO THE U.S. UNDER PRESIDENT TRUMP (55%)

MAJORITY OF AMERICANS SAY IT IS INAPPROPRIATE FOR POTUS TO CRITICIZE INDIVIDUAL COMPANIES (52%)

MAJORITY OPPOSE BORDER TAX ON MEXICAN PRODUCTS TO FUND WALL (62%)

MORE THAN 1/3 OF VOTERS BELIEVE AMERICA COULD CEASE TO EXIST DURING A TRUMP PRESIDENCY (36%)

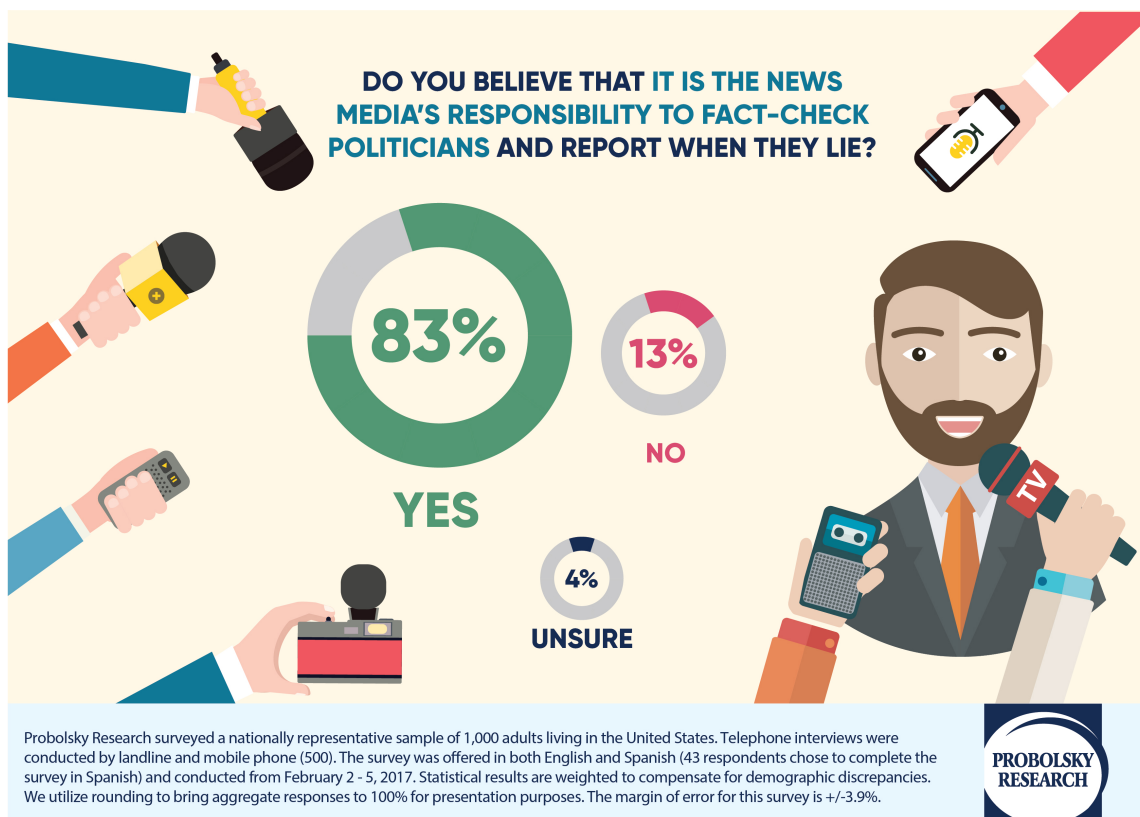
Probolsky Research regularly polls Americans on issues of public policy that we think are relevant to policy makers, corporate America and other stakeholders. Our team is comprised of people from a diverse set of backgrounds and political views, we are a non-partisan organization.



Probolsky Research
3990 Westerly Place Suite 185
Newport Beach CA 92660

Newport Beach (949) 855-6400
San Francisco (415) 870-8150
Washington DC (202) 559-0270

Here are the results of our February national poll:



QUESTION

Do you believe that it is the news media's responsibility to fact-check politicians and report when they lie?

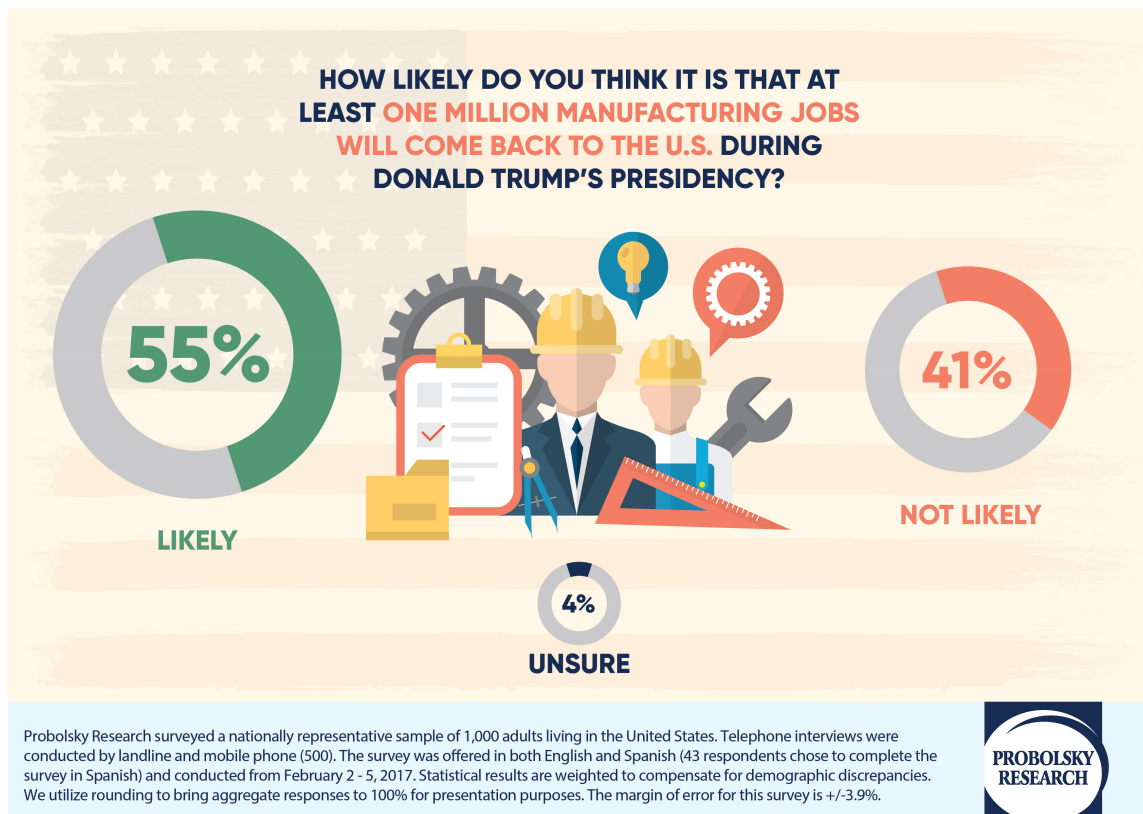
Yes	83%
No	13%
Unsure	4%

LINK TO INFOGRAPHIC: <http://www.probolskyresearch.com/wp-content/uploads/2017/02/Fact-check.jpg>



Probolsky Research
3990 Westerly Place Suite 185
Newport Beach CA 92660

Newport Beach (949) 855-6400
San Francisco (415) 870-8150
Washington DC (202) 559-0270



QUESTION

How likely do you think it is that at least one million manufacturing jobs will come back to the U.S. during Donald Trump's presidency?

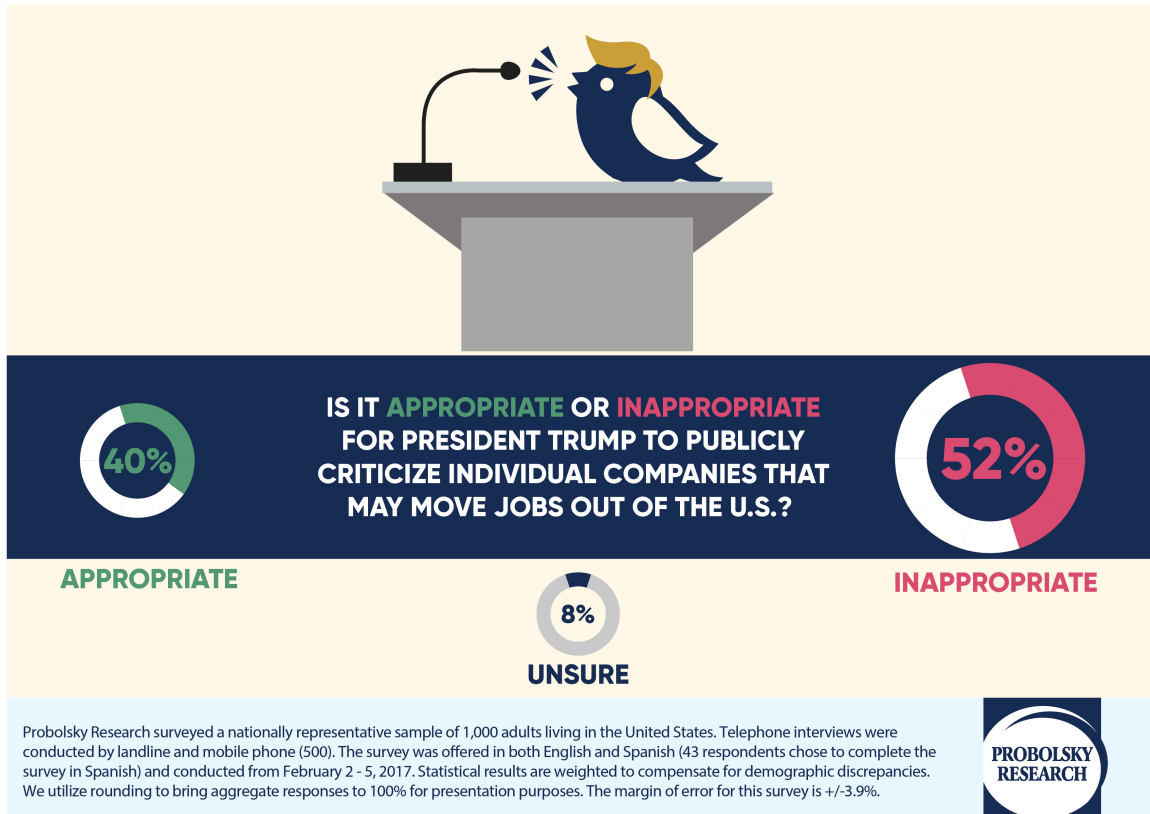
LIKELY	55% [NET]
Very likely	20%
Somewhat likely	35%
NOT LIKELY	41% [NET]
Somewhat unlikely	19%
Not at all likely	22%
Unsure	4%

LINK TO INFOGRAPHIC: <http://www.probolskyresearch.com/wp-content/uploads/2017/02/Manufacturing-jobs.jpg>



Probolsky Research
3990 Westerly Place Suite 185
Newport Beach CA 92660

Newport Beach (949) 855-6400
San Francisco (415) 870-8150
Washington DC (202) 559-0270



QUESTION

Do you think it is appropriate or inappropriate for President Trump to publicly criticize individual companies that may move jobs out of the U.S.?

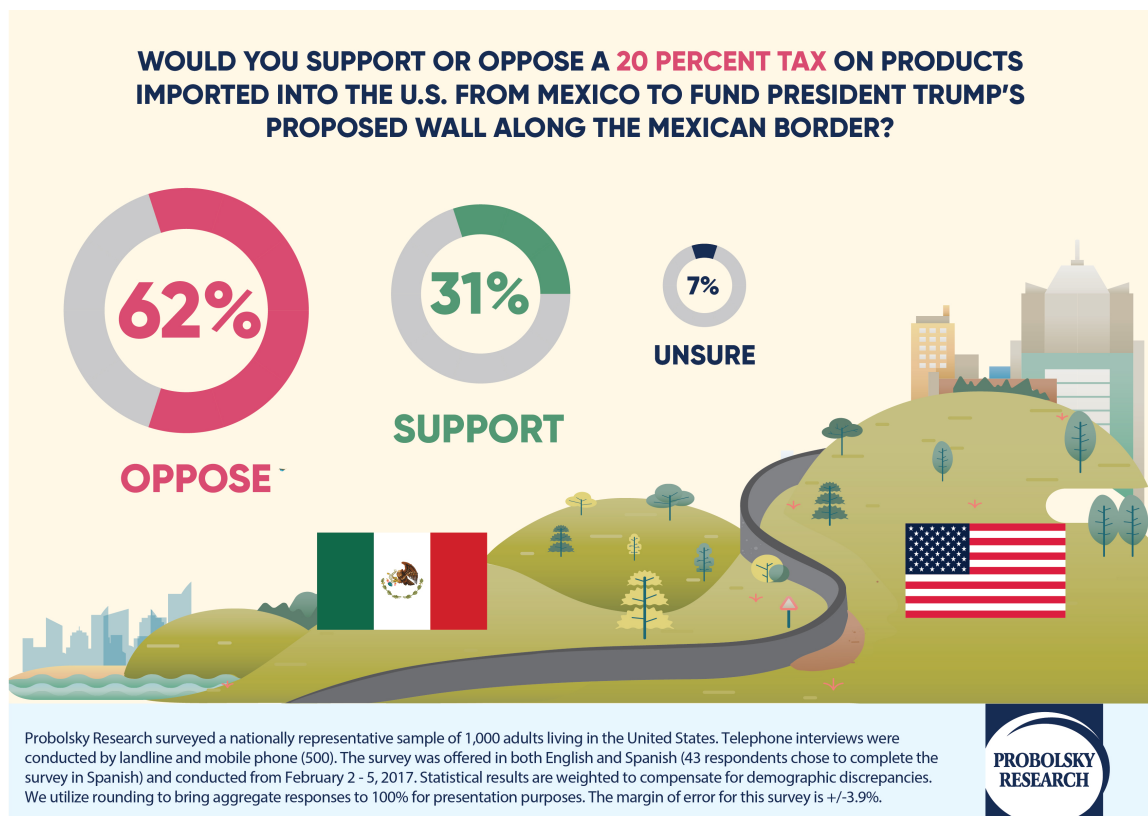
Inappropriate	52%
Appropriate	40%
Unsure	8%

LINK TO INFOGRAPHIC: <http://www.probolskyresearch.com/wp-content/uploads/2017/02/POTUS-on-Cos.jpg>



Probolsky Research
3990 Westerly Place Suite 185
Newport Beach CA 92660

Newport Beach (949) 855-6400
San Francisco (415) 870-8150
Washington DC (202) 559-0270



QUESTION

Would you support or oppose a 20 percent tax on products imported into the U.S. from Mexico to fund President Trump's proposed wall along the Mexican border?

Oppose	62%	
Support	31%	
Unsure	7%	

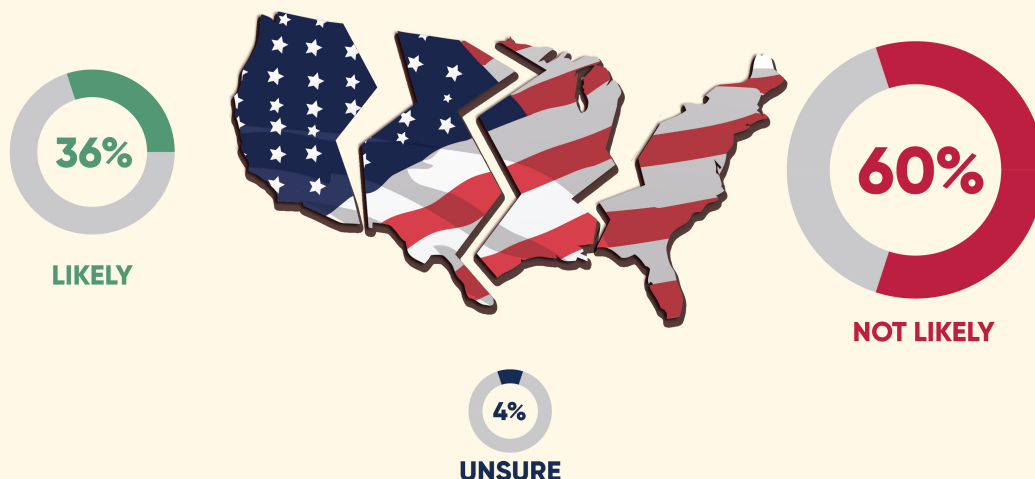
LINK TO INFOGRAPHIC: <http://www.probolskyresearch.com/wp-content/uploads/2017/02/Border-tax.jpg>



Probolsky Research
3990 Westerly Place Suite 185
Newport Beach CA 92660

Newport Beach (949) 855-6400
San Francisco (415) 870-8150
Washington DC (202) 559-0270

**HOW LIKELY DO YOU THINK IT IS THAT DURING THE TRUMP
PRESIDENCY THE GOVERNMENT WILL BREAK DOWN AND THE
COUNTRY WILL CEASE TO EXIST AS WE KNOW IT TODAY?**



Probolsky Research surveyed a nationally representative sample of 1,000 adults living in the United States. Telephone interviews were conducted by landline and mobile phone (500). The survey was offered in both English and Spanish (43 respondents chose to complete the survey in Spanish) and conducted from February 2 - 5, 2017. Statistical results are weighted to compensate for demographic discrepancies. We utilize rounding to bring aggregate responses to 100% for presentation purposes. The margin of error for this survey is +/-3.9%.



QUESTION

How likely do you think it is that during the Trump Presidency the government will break down and the country will cease to exist as we know it today?

Likely	36%
Very likely	15%
Somewhat likely	21%
Not likely	60%
Somewhat unlikely	20%
Not at all likely	40%
Unsure	4%

LINK TO INFOGRAPHIC: <http://www.probolskyresearch.com/wp-content/uploads/2017/02/End-of-America.jpg>



Probolsky Research
3990 Westerly Place Suite 185
Newport Beach CA 92660

Newport Beach (949) 855-6400
San Francisco (415) 870-8150
Washington DC (202) 559-0270

Methodology:

Probolsky Research surveyed a nationally representative sample of 1,000 adults living in the United States. Telephone interviews were conducted by landline and mobile phone (500). The survey was offered in both English and Spanish (43 respondents chose to complete the survey in Spanish) and conducted from February 2 - 5, 2017. Statistical results are weighted to compensate for demographic discrepancies. We utilize rounding to bring aggregate responses to 100% for presentation purposes. The margin of error for this survey is +/-3.9%.

Probolsky Research conducts opinion research on behalf of business, government, media, non-profit, and special interest clients. Adam Probolsky is CEO of Probolsky Research.



Probolsky Research
3990 Westerly Place Suite 185
Newport Beach CA 92660

Newport Beach (949) 855-6400
San Francisco (415) 870-8150
Washington DC (202) 559-0270